

# Buffalo Ridge Resort



23 CANVA STORIES



23 CANVA STORIES



23 CANVA STORIES



23 CANVA STORIES



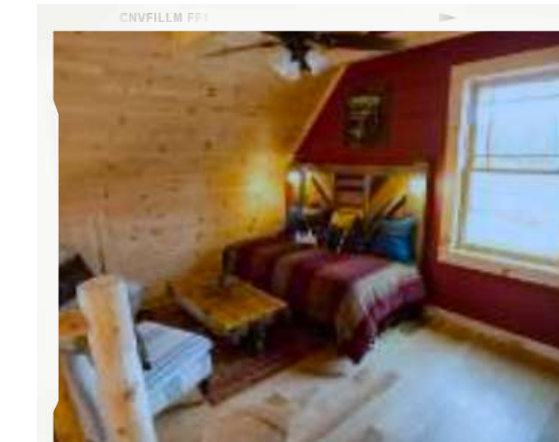
23 CANVA STORIES



23 CANVA STORIES



23 CANVA STORIES



23 CANVA STORIES



## INCLUDED FEATURES

### Exterior

- 6x8 white pine logs on first floor (13 rows)
- 5/8 OSB roof decking
- 30lb felt paper
- Owens-Corning limited lifetime architectural shingles
- West Low-E Insulated tan vinyl double hung windows or per plan
- 2x10 double rim joists
- Open joist floor joists 16" o/c
- 4 Flood lights
- 1 coach light at exterior doors
- 2 hose bibs
- 2 GF1 exterior receptacles
- Thermo-Tru 3068 fiberglass 9-lite doors
- Gable and shed dormers where applicable
- PermaChink stain and sealer provided

### Interior

- 5/8 OSB sub-floor decking
- Engineered flooring
- 1x12 tongue and groove white pine wall board
- 1x8 tongue and groove white pine ceiling board
- Knotty pine solid interior doors
- 52 in. ceiling fans in living room, dining room, and all bedrooms
- 1 TV and phone jack in living room, kitchen, and all bedrooms
- Can light over tubs and showers, vanity lights, exhaust fans
- Pine 1x4 base trim, 1x2 ceiling trim
- Merillat kitchen and vanity cabinets
- Granite kitchen counter tops
- Undermount Stainless steel kitchen sink
- Whirlpool 25 cubic ft refrigerator (black or stainless steel)
- Whirlpool 30 inch flat surface range
- Whirlpool 30 inch microwave
- Whirlpool 24 inch dishwasher
- Garbage disposal
- Granite bathroom counter tops
- 16" on-center wall studs
- All plumbing fixtures per standard plan in brushed nickel or oil rubbed bronze

### Available Options

- 8'-8" up to 9'-2" ceiling height
- 6x12 Dovetail logs or 8x8 D-Shaped logs
- Basement access
- Porches and decks
- West vinyl windows in optional colors
- West vinyl windows casement style
- Ply Gem Windows
- Custom cabinet options: spice racks, trash drawers, plate racks, glass doors, 42" upper cabinets, etc.
- Whirlpool Slate optional appliances



### These include:

- Open beamed ceilings
- Cathedral ceilings
- Solid wood wall coverings
- Solid wood siding
- Custom wood stairs and railings
- Custom wood trim
- Custom or solid wood interior doors
- Solid wood floors
- Custom wood cabinetry
- Masonry fireplaces
- Energy efficient windows
- Cedar shake, metal or slate roofs
- Set on large, often secluded lots
- Porches and decks

When comparing a log home to a similar sized custom conventional home that does not include these features, the value contributed to a conventional home can be added to give a more realistic picture of the value of the log home.

### Energy Efficiency

Log homes have a deserved reputation for energy efficiency. Tests performed by the federal government found a log structure to perform as well or better than other types of construction, including an R-11 insulated 2x4 framed wall structure, even though the nominal R-value of the log wall was less than nine.

Experts attribute the energy efficiency of log homes to thermal mass of the solid wood. In addition, a well-sealed and maintained log home does not exhibit the energy loss due to convection or air infiltration that is characteristic of framed wall construction.

Marshall & Swift turned to the Log Homes Council to learn how to more accurately capture the value of log homes in appraisals. The LHC assisted in developing "The Log Home Appraisal Training Guide" which was designed to be a companion text to the Residential Cost Handbook, a standard publication for Marshall & Swift.



## Custom Log Cabin Specifications Limited Lifetime Warranty on all materials

### Top Quality Solid Exterior Log Walls

6" x 8" White Pine D-shaped Butt & Pass Logs  
Quality assurance provided per the Timber Products Inspection Grading Rules  
Kiln dried to sterilize the logs, crystallize sap, and reduce the effects of shrinkage  
Closed cell foam tape installed as gasket between log courses  
Wood dowel pins to seal vertical butt joints  
Tempered and coated Log fasteners self-countersink

### Interior Wall System

2x4 wall framing 16" on center  
1x12 tongue and groove Eastern White Pine wallboard  
1x8 tongue and groove Eastern White Pine ceiling board  
1x4 pine base trim and 1x2 pine ceiling trim

### Interior Doors

Solid knotty pine arched v-groove doors  
Kwikset lever action locksets

### Exterior Doors

Thermo-Tru 3068 insulated fiberglass entrance doors  
West 6068 premier vinyl sliding glass door, Low E glass, DP50, with screen  
Thermo-Tru 6068 atrium center hinge fiberglass patio door  
Kwikset deadbolt handle sets installed on all 3068 doors  
Kwikset deadbolt locks installed on all 6068 center hinge doors

### Top Quality West Windows

Vinyl double-hung Low E glass, Dp-50 with screen  
Lifetime transferable limited warranty  
Windows available with grids between glass or no grids  
Full mesh screen with each operable window

### Kitchens

Merillat Classic Cabinets, all plywood box with soft close doors & drawers  
Granite countertops & backsplash  
Whirlpool Stainless Steel appliances including:  
25 CF refrigerator with water and ice dispenser  
30 inch radiant range glass top  
24 inch under counter dishwasher  
Microwave installed over range  
Under mount stainless steel sink with Peerless single lever faucet  
1/2 HP garbage disposal



### Bathrooms

- Merillat Classic Cabinets
- Cultured marble vanity top
- Elongated commodes
- Aquatic whirlpool tubs
- Aker fiberglass tubs and showers
- Peerless faucets

### Floor Materials

- 9 1/4" wood Open-Joist floor joists; 16" on center
- 5/8 OSB sub-floor glued & nailed decking
- 3/4 x 1x6 Tongue & Groove Solid Yellow Pine flooring

### Roof Materials

- 5/8 OSB roof decking
- 30 lb. felt paper
- Owens Corning Duration limited lifetime architectural shingles
- R-38 Owens Corning roof insulation

### Plumbing Materials

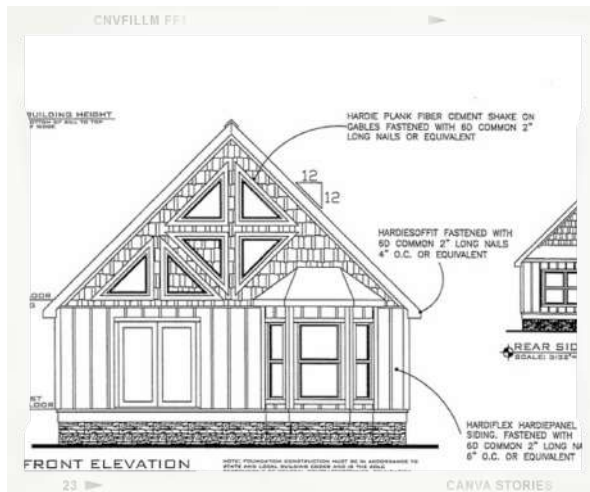
- Pex supply lines
- PVC drain & vent lines
- 50 gallon electric water heater
- Two exterior hose bibs

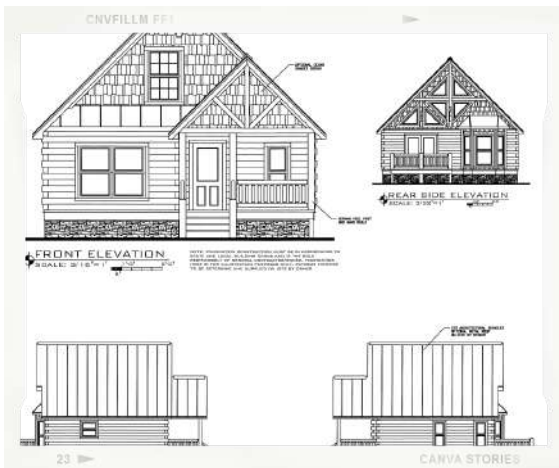
### Electrical Materials

- 200 amp load center with breakers
- All electrical wiring to code
- Four exterior outside corner flood lights
- One coach light per exterior door
- Two exterior GFI receptacles
- Hunter ceiling fans in Bedrooms & Living areas

### Designed with State-of-the-Art Drafting Software

Complete set of sealed engineered plans provided with each home





# MOUNTAIN ARCHITECTURE

## INCLUDED FEATURES

### Exterior

- 2x6 frame construction
- Fiber cement board and batten
- Fiber cement shake siding
- 30lb felt paper
- Owens-Corning limited lifetime warranty architectural shingles
- West Low-E insulated double hung windows-taue
- Open joist floor joists 16" on-center
- Double flood lights at each corner
- Exterior coach light per door
- 2 hose bibs
- 2 GFI exterior receptacles
- Thermo-Tru 3068 fiberglass 9-lite doors

### Interior

- 5/8 OSB sub-floor decking
- Engineered flooring
- 1 1/2" o/c wall studs
- 1x12 tongue and groove white pine wall board
- 1x8 tongue and groove white pine ceiling board
- Knotty pine solid interior doors
- Ceiling fans in living room, dining room, bedrooms
- CATV in living room, kitchen, all bedrooms
- Recessed can lights over tubs and showers
- Vanity lights
- Pine 1x4 base trim, 1x2 ceiling trim
- Merrilat Classic Cabinets in Maple, Oak, or Hickory
- All plumbing fixtures per standard plan
- Stainless steel undermount sink
- Whirlpool 25 cubic ft refrigerator (black or stainless steel)
- Whirlpool 30 inch smooth top range
- Whirlpool 30 inch microwave
- Whirlpool 24 inch dishwasher
- Garbage disposal
- Granite countertops
- Pine stairs per plan

### Options

- Poplar bark siding
- Cedar shake siding
- Ply-Gem windows

